

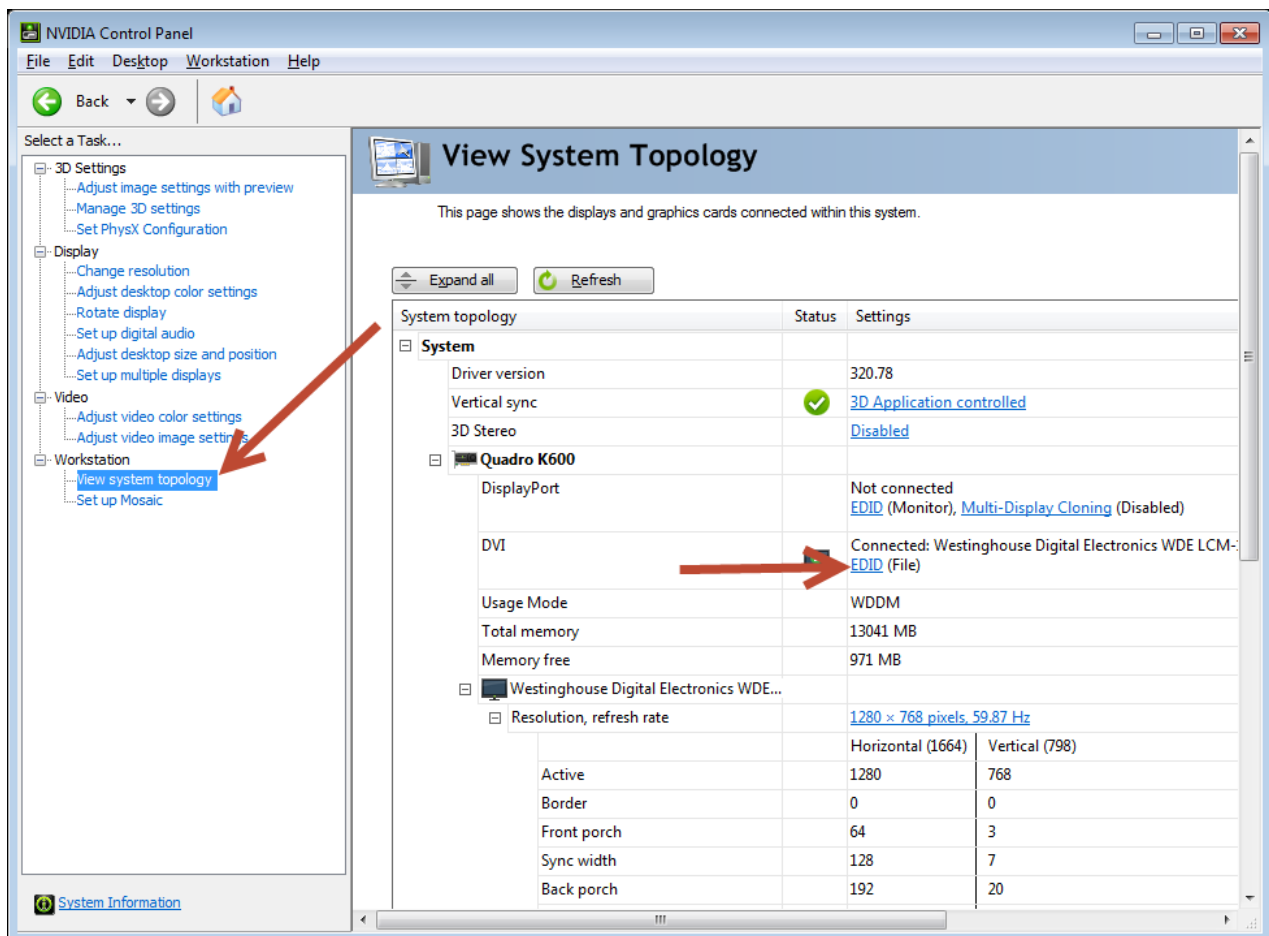
KVM or Robotel Sync Issues – Avid Media Composer - How to resolve.

When switching between systems connected via KVM switches, some graphics cards may try to auto detect resolutions of the monitors causing problems with some software packages, even when the resolutions between systems are the same. Here is something you can try to resolve it. The nVidia cards allows you to save a monitor profile loaded in the card so instead of trying to sync (hand shake) again when you switch between system, the card has the information it need already loaded.

If you are using Avid, you might be getting an error message; Avid detected a resolution change, please restart. This can resolve that issue.

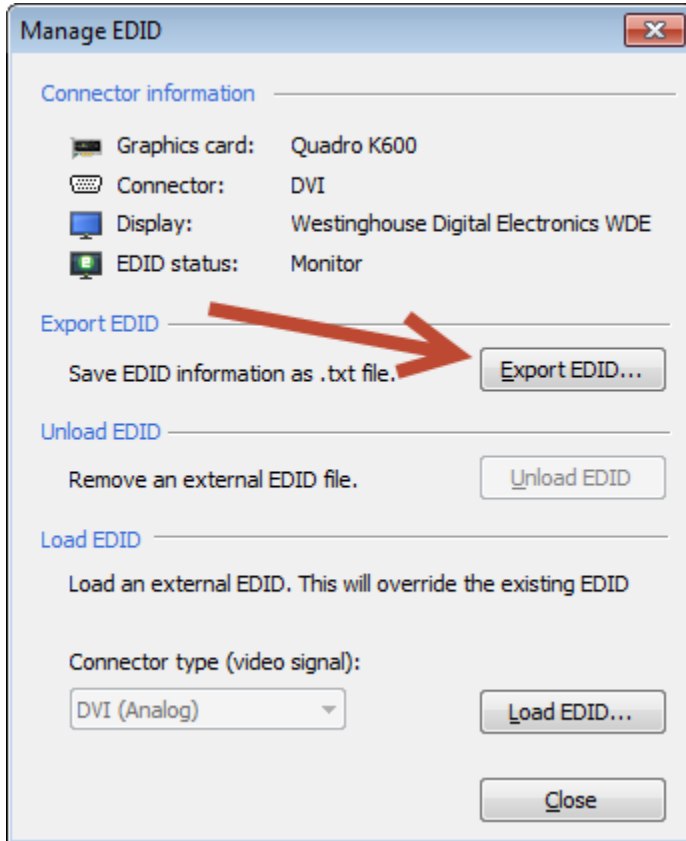
SAVING & LOADING THE EDID Profile(s) for your Monitors

1. Right-click on the desktop and choose NVIDIA Control Panel (or go to it via the Programs menu).
2. Under “**Workstation Settings**” select “View System Topology”, as shown below:



Note: Your numbers and connection types will look different than shown above.

3. Click on the “EDID” link for one of the DVI ports and then click the “Export EDID” button shown below, and save it to the desktop. Name this something like EDID 1 so you remember which file goes with which port. If you have two monitors repeat this step for monitor 2.



4. Next click “Load EDID...” button and load the text file you just saved to the desktop. i.e Monitor 1.txt for monitor 1 and monitor 2.txt for monitor 2.

6. Now launch Avid on the workstation and load some media into the source monitor and test this by switching you KVM switch or Robotel between system or modes.