

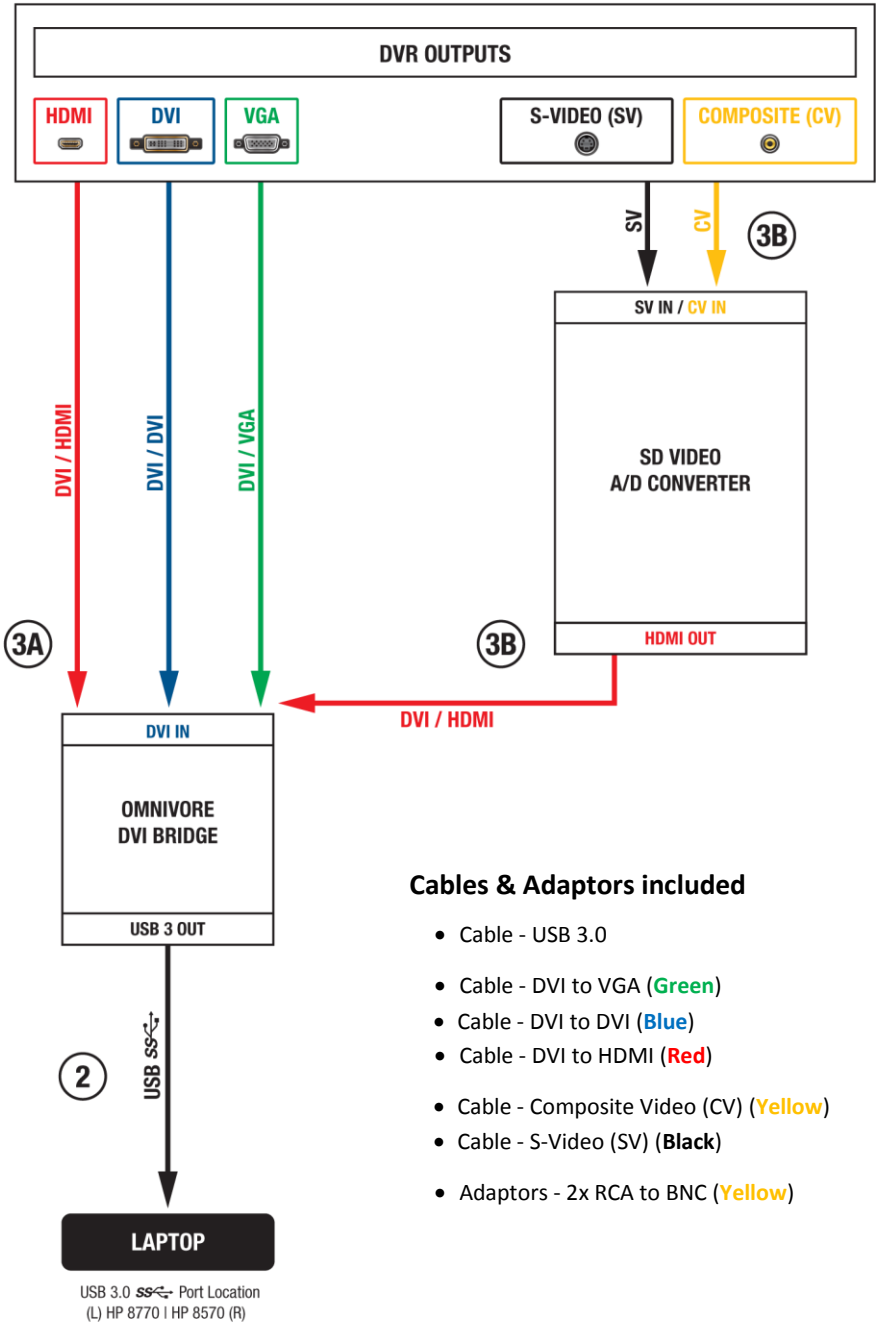
Omnivore Field Kit Setup & Capture Guide



4016 Blackburn Lane
Burtonsville, MD 20866
Phone: 301-476-8015

www.oceansystems.com
sales@oceansystems.com
support@oceansystems.com

Color-Coded Setup Diagram



Cables & Adaptors included

- Cable - USB 3.0
- Cable - DVI to VGA (Green)
- Cable - DVI to DVI (Blue)
- Cable - DVI to HDMI (Red)
- Cable - Composite Video (CV) (Yellow)
- Cable - S-Video (SV) (Black)
- Adaptors - 2x RCA to BNC (Yellow)


Steps for Setup & Capture

Step 1 – Evaluate Video Sources from DVR

Determine which video output sources are available on the DVR, and then follow the Color-Coded Setup Diagram to determine the required cables and devices to complete the connection.

HDMI, DVI, VGA, SV, and CV are the connection types in order of quality of transport. Because there are no standards to how DVRs implement the transmission of video across these ports, it is recommended that you test more than one of them, if available, to determine which displays the most complete picture, provides the best image quality, and the correct aspect ratio of the recorded video.

Step ② – Connect “Omnivore DVI Bridge” to Laptop using the USB 3.0 Cable

Be sure to connect to a port on the laptop labeled USB 3.0 .

Next, choose either Step 3A or 3B depending on your video source.

Step ③A – Connecting to VGA, DVI, and HDMI Sources

Connect the “Omnivore DVI Bridge” to one of the DVR outputs using the correct corresponding cable:

- For VGA source – DVI/VGA (**Green**)
- For DVI source – DVI/DVI (**Blue**)
- For HDMI source – DVI/HDMI (**Red**)

Step ③B – Connecting to Composite Video (CV) or S-Video (SV) Sources

First, connect the “SD Video A/D Converter” to the “Omnivore DVI Bridge” using the DVI/HDMI cable (**Red**).

Then connect the “SD Video A/D Converter” to the DVR outputs using the correct corresponding cable:

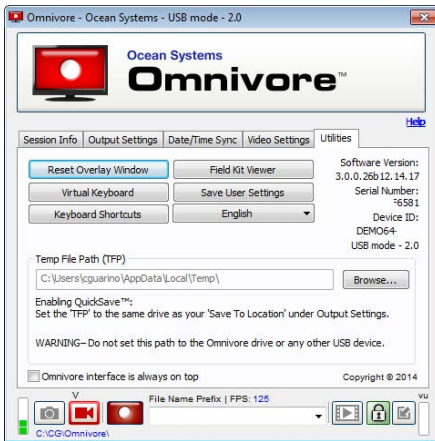
- For Composite Video source – CV/CV (**Yellow**)
- For S-Video source – SV/SV (**Black**)

Step 4 – Launching Omnivore Field Kit Viewer

Plug the Omnivore Thumb Drive into an active USB port on the Field Kit Laptop.

Omnivore is a USB 2.0 device that will work in both USB 2.0 and 3.0 ports – USB 3.0 ports are backwards compatible.

With the Omnivore capture software launched, go to the “Utilities” Tab and click the “Field Kit Viewer” button.



NOTE:

The “Field Kit Viewer” will only launch if you have the “Omnivore DVI Bridge” connected.

If not, you will get a warning message.

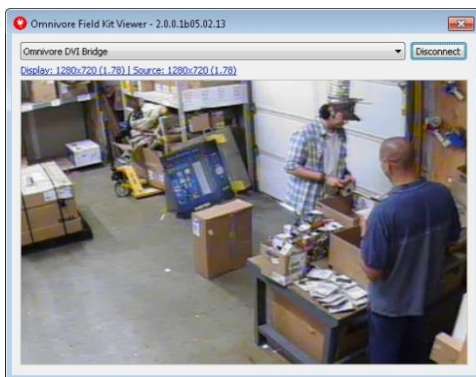
Step 5 – Activate Video Feed in Omnivore Field Kit Viewer

With the “Field Kit Viewer” open, you should see the “Omnivore DVI Bridge” listed.

Click “Connect” to see the DVR video source in the viewer. The viewer will open to match the dimensions and aspect ratio of the video signal it is reading. The dimensions and aspect ratio are displayed in blue.

Resizing the Field Kit Viewer

Changing the dimensions of the viewer will scale the video to those dimensions. To resize the window with a locked aspect ratio, click the blue dimensions text to access the locked aspect ratio feature before entering new dimensions.



If you don't maintain the same aspect ratio when changing dimensions from the original default, objects in the video may distort—for example, circles may become ovals.

Changing Input Sources

Click “Disconnect” and then reconnect to refresh the viewer so that it's set to the proper settings for the new source.

Step 6 – Capture video with Omnivore capture software

For more information on Omnivore capture software, click Help to access the Omnivore product guide.