

Omnivore Release Notes

Version 3.6



VIDEO & IMAGE CAPTURE | PASSWORD SECURE



4016 Blackburn Lane
Burtonsville, MD 20866
Phone: 301-476-8015

www.oceansystems.com
sales@oceansystems.com
support@oceansystems.com

Software Version 3.6
Doc Date 08-19-2021

Omnivore 3.6.0.0 Release Notes

Version	3.6.0.0	3.5.0.11	3.5.0.10
Release Date	08/23/2021	07/27/2021	07/20/2021
Support Date*	08/01/2021	06/01/2021	06/01/2021

* Free upgrade to customers that are in support as of this date.

[Get back in support by renewing securely online!](#)

Omnivore 3.6.0.0 - Released 08/23/2021

New Features

- FFmpeg Convert Batch Processing – Added ability to drag & drop multiple individual files, as opposed to a single folder.
- FFmpeg Convert Batch Processing - Added support for scanning sub-folders when batch processing a folder.
- “Support – Installers and drivers” folders added to Omnivore ROM, this includes the Omnivore Field Kit driver, Omnivore Manager utility, and Apple QuickTime installer.
- Help Assistant Prompt added to Omnivore Viewer > export to MOV. If Apple QuickTime is not installed on the host system, Omnivore will recognize this and prompt you to install it using the QuickTime installer now loaded on the omnivore rom partition.
- Help Assistant Prompt added to Omnivore Viewer > export to WMV. If attempting to export OMVA to compressed WMV user is directed to export to MP4 or MOV. Previously this option was grayed out.
- Help Assistant Prompt added notifying users that after updating their Omnivore drive’s software they need to eject & re-insert the drive for the update to take effect.

Bug Fixes

- Fixed UHD scaling issue with the icons in the “Start Here” window.
- Fixed thumbnail preview bug in FFmpeg Convert.

Omnivore 3.5.0.11 Release Notes

Version	3.5.0.11	3.5.0.10	3.4.0.3
Release Date	07/27/2021	07/20/2021	11/25/2020
Support Date*	06/01/2021	06/01/2021	05/01/2020

* Free upgrade to customers that are in support as of this date.

[Get back in support by renewing securely online!](#)

Omnivore 3.5.0.11 - Released 07/27/2021

Bug Fixes

- Fixed bug that required users to mark IN/OUT points twice in FFmpeg Convert's video preview player.
- Fixed bug with saving captures to Omnivore's Unsecured or Secured partitions.

Omnivore 3.5.0.10 Release Notes

Version	3.5.0.10	3.4.0.3	3.3
Release Date	07/20/2021	11/25/2020	08/01/2019
Support Date*	06/01/2021	05/01/2020	07/01/2019

* Free upgrade to customers that are in support as of this date.

[Get back in support by renewing securely online!](#)

Omnivore 3.5.0.10 - Released 07/20/2021

New Features

- **New & Improved Omnivore™ Field Kit Viewer!**
 - Auto-detects digital sources, stores data directly to file rather than sampling the signal.
 - Automatically locks aspect ratio to that of the source.
 - Convenient controls for controlling display size.
 - Better performance.
- **New FFMpeg Convert Video Preview player** with integrated navigation and mark-in/mark-out controls.
 - Quickly & easily mark IN/OUT points to process only a section of video.
- **Updated XMLViewer** to include text search and Drag & Drop file open capability.
- **Added a “Start Here” Home Screen**, to quickly access FFMpeg Convert, Omnivore™ or the Field Kit Viewer.
- **Added Lossless Trimming to FFMpeg Convert!**
 - Users can now leverage FFMpeg Convert to losslessly trim FFMpeg supported videos!

Bug Fixes

- Fixed bug where capturing video to Omnivore UNSECURED partition sometimes caused program to crash.
- Fixed bug where Previewer would sometimes freeze.

Omnivore 3.4.0.3 Release Notes

Version	3.4.0.3	3.3	3.1
Release Date	11/25/2020	08/01/2019	03/28/2019
Support Date*	05/01/2020	07/01/2019	03/01/2019

* Free upgrade to customers that are in support as of this date.

[Get back in support by renewing securely online!](#)

Omnivore 3.4.0.3 - Released 11/25/2020

Maintenance Release

- Fixed bug with Omnivore Previewer flashing white images while playing back video after a capture, experienced by some Win10 users.
- Fixed bug where overlay captured OS window shading & shadow border area around snapped-to windows, even when those features were disabled in the OS (*i.e. transparent*).
- Renamed “helpers” folder on ROM partition to “dependencies”.

Omnivore 3.4 Release Notes

Version	3.4	3.3	3.1
Release Date	06/12/2020	08/01/2019	03/28/2019
Support Date*	05/01/2020	07/01/2019	03/01/2019

* Free upgrade to customers that are in support as of this date.

[Get back in support by renewing securely online!](#)

Omnivore 3.4 - Released 06/12/2020

New Features

- Updated FFmpeg Convert to identify & process more file types.
- Improved Omnivore’s Optimization Process & Notifications
 - Improved notification process for situations where optimization fails.
 - Auto resets optimization values after failed optimization when user attempts new optimization without manually resetting.
 - Notice to re-optimize when users change output settings after performing an optimization.
- FFmpeg **Convert** window resized to fit lower resolution displays.
- **Audio Capture Settings Guide** updated for Win10.

Omnivore 3.3 Release Notes

Version	3.3	3.1	3.0.0.26
Release Date	08/01/2019	03/28/2019	06/15/2018
Support Date*	07/01/2019	03/01/2019	01/01/2015

* Free upgrade to customers that are in support as of this date.

[Get back in support by renewing securely online!](#)

Omnivore 3.3 - Released: 08/01/2019

New Features

- **Omnivore Viewer – FFmpeg Convert**
 - Added BATCH processing capability
 - Added ability to playback files using FFplay
 - Added video thumbnail and basic metadata to UI
 - Added FFprobe Container & Streams report
 - Added FFprobe Frame Information report (XML)
 - Added all new FFmpeg XML Viewer for viewing Frame Information reports
 - Added ability to change video output dimensions\correct aspect ratio
 - Added ability to change video output frame rate (FPS)
 - Added ability to TRIM video to duration of interest
 - Added ability to export uncompressed WAV
 - Added ability to export compressed MP3
- **Added Video Standards & Display Aspect Ratio chart (PDF) & updated HELP files**

Omnivore 3.1 Release Notes

Version	3.1	3.0.0.26	3.0.0.25
Release Date	03/28/2019	06/15/2018	11/22/2017
Support Date*	03/01/2019	01/01/2015	01/01/2015

* Free upgrade to customers that are in support as of this date.

[Get back in support by renewing securely online!](#)

Omnivore 3.1 - Released: 03/29/2019

- **NEW Omnivore Viewer – FFmpeg Convert!**
 - Omnivore Viewer now includes FFmpeg Convert, which allows Omnivore users to open and process any file supported by FFmpeg on any Windows PC.
- Fixed Omnivore Viewer bug that doubled the frame count when exporting captures with Timecode captures to MOV.

Omnivore 3.0.0.26 Release Notes

Version	3.0.0.26	3.0.0.25	3.0.0.17
Release Date	06/15/2018	11/22/2017	02/06/2015
Support Date*	01/01/2015	01/01/2015	01/01/2015

* Free upgrade to customers that are in support as of this date.

[Get back in support by renewing securely online!](#)

Omnivore 3.0.0.26 Maintenance Release - Released: 06/15/2018

- Fixed Omnivore Updater application errors when ran on Win10 build 1803.

Omnivore 3.0.0.26 Release Notes

Version	3.0.0.26	3.0.0.25	3.0.0.17
Release Date	04/20/2018	11/22/2017	02/06/2015
Support Date*	01/01/2015	01/01/2015	01/01/2015

* Free upgrade to customers that are in support as of this date.

[Get back in support by renewing securely online!](#)

Omnivore 3.0.0.26 Maintenance Release - Released: 04/20/2018

- Fixed bug with Omnivore Viewer opening OMVA captures larger than 4 GB properly.

Omnivore 3.0.0.26 Release Notes

Version	3.0.0.26	3.0.0.25	3.0.0.17
Release Date	12/15/2017	11/22/2017	02/06/2015
Support Date*	01/01/2015	01/01/2015	01/01/2015

* Free upgrade to customers that are in support as of this date.

[Get back in support by renewing securely online!](#)

Omnivore 3.0.0.26 Maintenance Release - Released: 12/15/2017

- Fixed bug where using TIFF for image capture occasionally caused Omnivore to crash.

Omnivore 3.0.0.25 Release Notes

Version	3.0.0.25	3.0.0.17	2.0
Release Date	11/22/2017	02/06/2015	05/27/13
Support Date*	01/01/2015	01/01/2015	01/01/2013

* Free upgrade to customers that are in support as of this date.

[Get back in support by renewing securely online!](#)

Omnivore 3.0.0.25 Maintenance Release - Released: 11/22/2017

- **New:** Added “Set to TFP” (*Temporary File Path*) link on OUTPUT SETTINGS tab. Clicking link after setting Output location automatically sets TFP to same path.
- **New:** Added additional system information to OMV/OMVA files and report, such as Operating System, Time Zone, CPU, and Video card.
- Fixed issue with Microsoft Defender & Security Essentials recent update(s) identifying Omnivore & Omnivore Viewer as security threat, preventing from launching.
- Fixed bug that occasionally disabled play button after captures played through until the end of file.
- Fixed bug in Omnivore Viewer where AVI files were being exported as 0 KB in size.

Omnivore 3.0.0.17 Release Notes (02.06.2015)

- Omnivore 3.0 Software with new features
- Save Settings/User Preferences Per User
- Languages (English, Spanish, Portuguese, German, French)
 - Includes Capture report and mouse over messages
- Disable Countdown on overlay
- Clock Modes: Active Ticking Clock Mode or Passive Clock Mode (on/off)
 - Change buttons to say "Set" vs "Set/Sync" is now model to Active and Passive Clock Mode
 - Added message to reset clock when going from Passive to Active if time was already set.
- Set/Sync Clock Reset: now resets to +1 min instead of +2
- Disable end path on Save to "My Computer" selection is now a model setting.
- Capture Report updated - include Active Clock mode and new language about file creation date
 - Active and Passive Clocks with better explanations of each mode as notes.
 - Added super script to explanation for "File Created Date/Time" to prompt user to the explanation
- DVR Recovery Worksheet in help
- New USB 3.0 64 GB Drives available
- USB Port Mode detection: USB 2.0/3.0 Mode displayed in OMN header and Misc. Tab
- "Save as compressed JPEG MP4" added to Omnivore Viewer export options
- "Save as compressed MP3" added to Omnivore Viewer export options
- MP3 and MP4 added to Batch processing options

Bug Fixes

- Bug Fix: WVM export - Was exporting whatever frame you were on as the first frame in the video

Save Settings/User Preferences Per User

Omnivore 3.0 introduces the ability to save user settings and preferences, such as an individual's preferred overlay color, image file format, output locations, and other video overlay settings.

The "Save User Settings" button is located on the **Utilities** tab within Omnivore 3.0, as shown to the right.

User settings/preferences are stored as *.preference* files to a hidden folder on the unsecure partition of the Omnivore 3.0 device.

For information on backing up and restoring the user list and each user's preferences, see the [Appendix](#).

Languages (English, Spanish, Portuguese, German, French)

Omnivore 3.0 now supports five different languages, and users can save their language preference using the new "Save User Settings" feature.

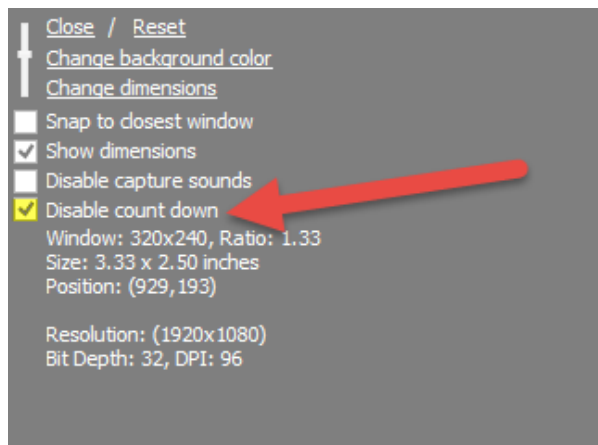
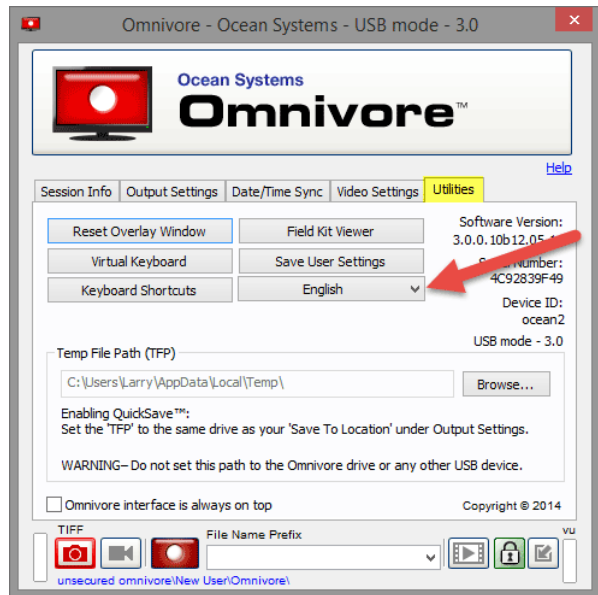
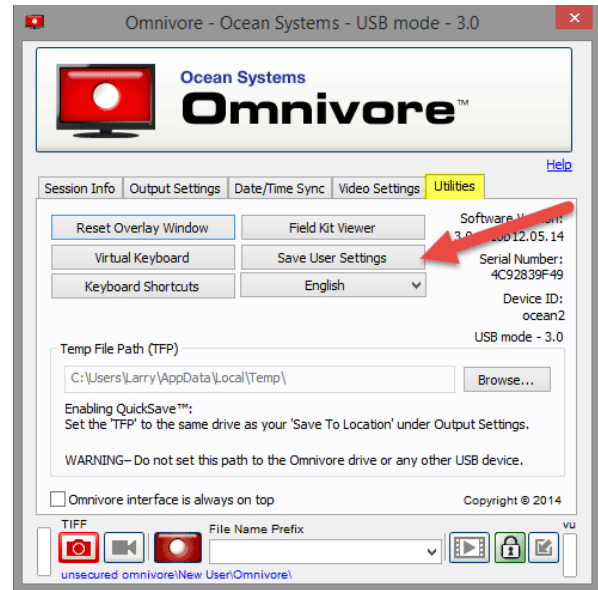
Language selection is made via the **Utilities** tab, as shown to the right.

The language preference applies not only to the Omnivore interface, but also to the overlay window, mouse-over messages, and even the Omnivore Capture Report.

Disable Countdown on Overlay

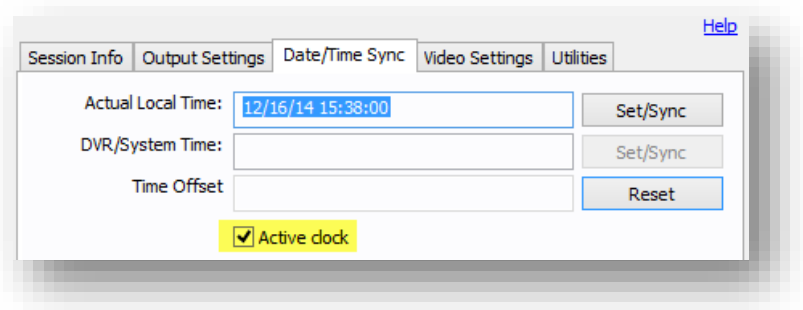
A new checkbox option has been included on the overlay window that allows users to disable the countdown prior to starting a video capture.

As with the other settings available in the overlay, this new setting can also be retained by using the new "Save User Settings" feature.



Clock Modes: Active Ticking Clock Mode or Passive Clock Mode (on/off)

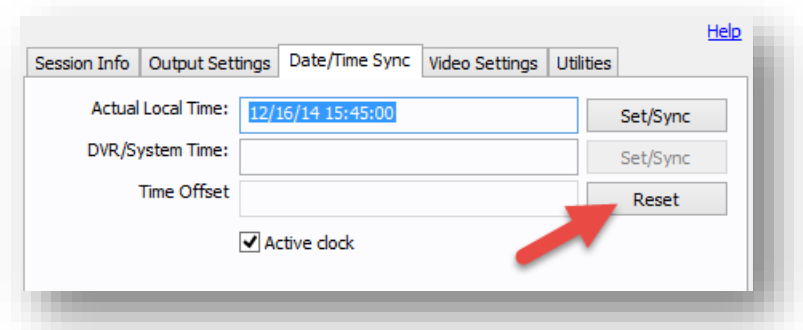
The **Date/Time Sync** tab has historically only provided an active clock for the “Actual Local Time” setting, meaning that once you click the “Set/Sync” button associated with the “Actual Local Time” the clock begins ticking.



In Omnivore 3.0 we’ve included a checkbox option that disables the active clock (shown above), so historical time references can be used directly during post-processing. To disable the active clock simply uncheck the “Active clock” checkbox.

Set/Sync Clock Reset: now resets to +1 min instead of +2

In previous versions of Omnivore clicking the reset button on the **Date/Time Sync** tab would prefill the “Actual Local Time” field by adding 2 minutes to the host computer system’s current date/time.



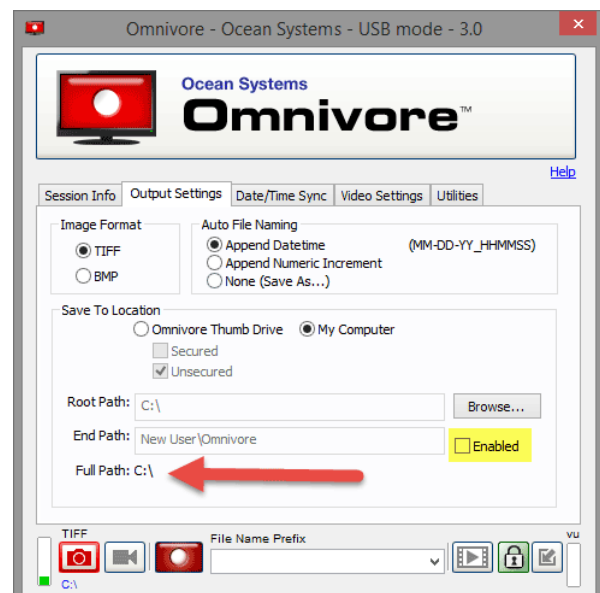
This has been changed to only add 1 minute to the host computer system’s current date/time, in order to reduce the time required to complete the synchronization.

Disable end path on Save to “My Computer” selection is now a model setting

On the **Output Settings** tab Omnivore users now have the option to disable the default End Path, which by default creates a Case ID sub-folder under each User Name’s folder.

Unchecking the “Enabled” checkbox next to the End Path (shown to the right) disables the default End Path, and saves the session’s captures directly to the Root Path.

As with most other settings, this new setting may also be saved in the user’s preference file.



Capture Report Updated

The Omnivore Capture Report has been updated to include information regarding the new Active/Passive clock mode, as shown to the right. An explanation of each mode is also provided in the new report.

Additionally, we have included more information regarding the “File Created” date/time reported in the Capture Summary.

DVR Recovery Worksheet in Help

We’ve added the Ocean Systems DVR Recovery Worksheet to the Omnivore Help page.

This 2-page worksheet is provided as a form fillable PDF that provides guidance on the information users should consider collecting during Digital CCTV recoveries.

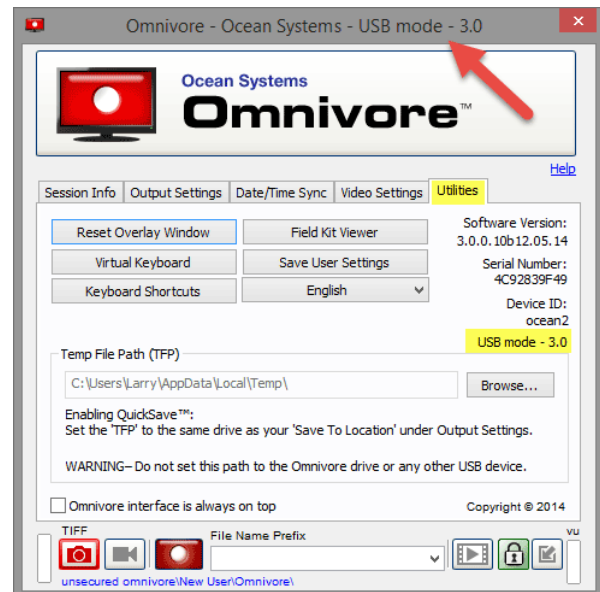
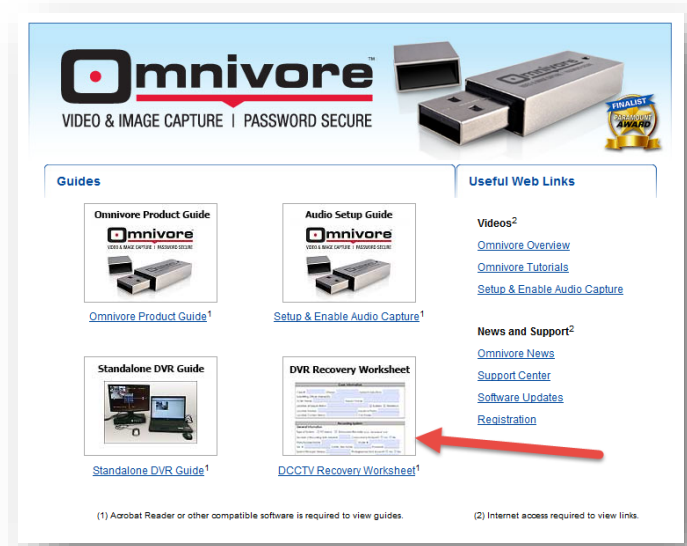
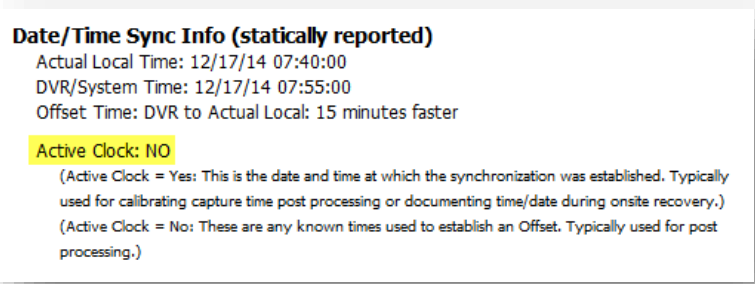
New USB 3.0 64GB Drives

Omnivore 3.0 doubles the capacity of previous Omnivore drives from 32 GB to 64 GB, and Omnivore 3.0 drives are USB 3.0 compatible. USB 3.0 provides theoretical data transfer speeds up to 10x faster than USB 2.0. Double the storage, more than doubling the transfer speed!

USB Port Mode Detection

Omnivore 3.0 will detect and report whether it is operating at USB 3.0 or USB 2.0 speeds.

This information is reported in the application’s Title bar, and it is also included under the Device ID on the **Utilities** tab (as shown to the right).



“Save as compressed JPEG .MP4” added to Omnivore Viewer export options

Omnivore Viewer now provides an additional output option that allows users to export their captures as compressed MP4 files.

“Save as compressed MP3” added to Omnivore Viewer export options

Omnivore Viewer now provides an additional output option that allows users to export their audio as compressed MP3 files.

MP3 and MP4 added to Batch processing options

Omnivore Viewer’s Batch convert tool now provides MP3 and MP4 file type options.

Bug Fix: WVM export

Previous versions of Omnivore Viewer were found to have a bug in the “Save as compressed WMV...” output option, where the first frame of the resulting file would be whatever frame the Omnivore Viewer’s timeline slider was currently on, rather than the first frame of the capture or the Mark In point. This bug has been resolved with Omnivore 3.0

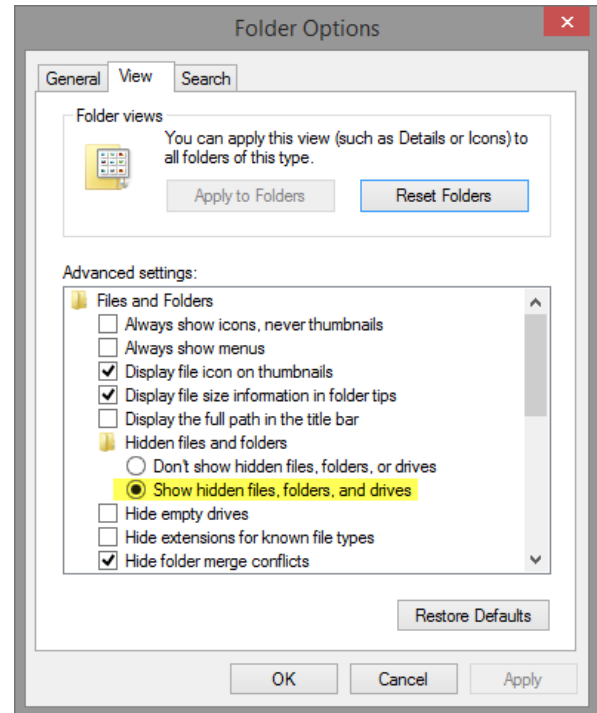
Appendix

Backup & Restore Users and Preferences

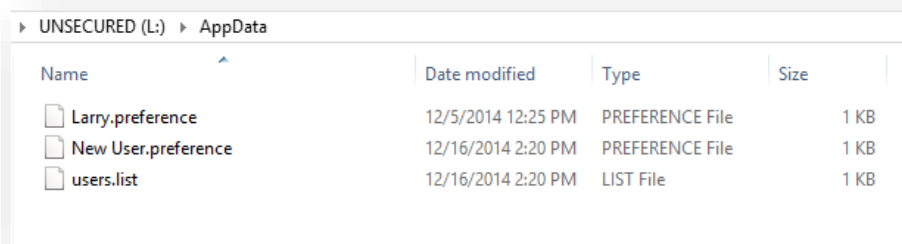
In order to make a backup copy of any currently saved user settings you will need to enable “Show Hidden Files/Folders” within your Windows operating system (*may require Administrator privileges*). This setting is found under “Folder Options”, accessible via the Windows Control Panel.

On the “View” tab, look for “Hidden files and folders” and select the “Show hidden files, folders, and drives” radio button, then click OK.

Once this is done, navigate to the UNSECURE partition of the Omnivore and you’ll see an “AppData” folder and a “users.list” file at the root of the drive (*as well as any other files that you’ve stored to the UNSECURE partition*).



The *users.list* file at the root of the unsecure partition is used by Omnivore to store the list of users created and used by the device. Omnivore makes a backup copy of this file and stores it in the *AppData* folder, along with all of the individual user preference files. All users who have saved their preferences will have a *.preference* file within the *AppData* folder, as shown below.



Backing Up Users & Preferences

To save a backup copy of the users and preferences simply copy all of the files in the *AppData* folder to your backup location.

Restoring Users & Preferences

To restore, place your backup copy of the *users.list* file at the root of the UNSECURE partition. Next you’ll need to create a new hidden folder at the root of the UNSECURE partition and label it “AppData”. Finally, place the *username.preference* files inside the *AppData* folder.